

WAFES
REFRIGERATION INDUSTRY L.L.C
The Legitimate



وافيس
صناعات التبريد ش.م.ذ.م.ع.
الشرعي



Contact with us:

Phone : +971 6529 8887

Gmail : sales@wafes.ae

Website : www.wafes.ae

Address : Wafes Refrigeration Industry
Umm Dera, New Industrial Area,
Umm Al Quwain, UAE



WAFES
REFRIGERATION INDUSTRY L.L.C
The Legitimate

وافيس
صناعات التبريد ش.ذ.م.ق.
الشرعي

Our state-of-the-art facility spans area of 200000 sq-ft. to meet the demands for quality insulated panels and established itself as the regional leader in manufacturing cold room panels, Refrigerated truck panels & Refrigeration units. Wafes Production line is facility from Italy with a production capacity of over 300000m² panels per anum.

We have one of the biggest line in middle east that can produce 14x3.5 meters length panels and integrated lifting equipment to handle such huge panel delivery and installation.

STATE-OF-THE-ART PRODUCTION FACILITY



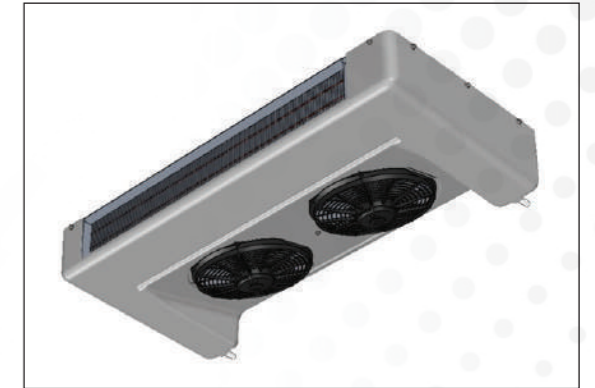


Refrigeration Units- Made in UAE

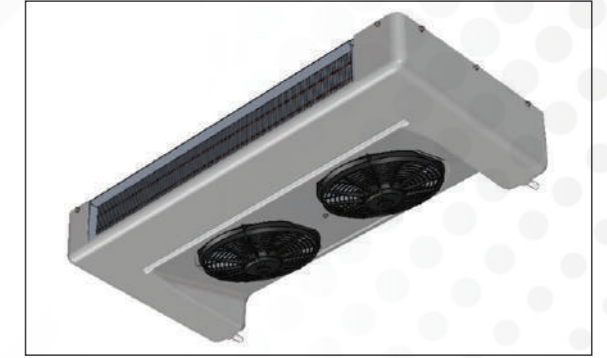
With our R&D expertise we had developed Chill Refrigeration units to meet the extreme Geographical weather conditions of GCC. Chill Units are tested and proven in GCC ambient temperatures so 3 years warranty is offered for Chill units

Transport Refrigeration Units: Direct-drive rooftop refrigeration unit

Chill201 - Chiller			
Cooling Capacity	0°C/+45°C	2000W	6824Btu
Temperature Range	0°C~+30°C		
Voltage	DC12V/24V		
Evap. Air Volume	850m³/h		
Refrigerant & Volume	R134a/1.0kg		
Compressor	QP14, 138cc/r		
Condenser	Coils	Parallel flow	
	Fan Qty	1 Pcs	
	Size	762*593*175mm	
	Weight	25kg	
Evaporator	Coils	Copper tube and fin	
	Fan Qty	2 Pcs	
	Size	813*533*170mm	
	Weight	13kg	
Recommended Box Size	Upto 3.5m³		



Chill 301 - Chiller			
Cooling Capacity (+38°C/100°F)	Temperature	Watt	Btu
	0°C	3100	10577
Temp. Range		0°C~+30°C	
Voltage		DC12V/24V	
Defrosting		Auto defrosting	
Airflow Volume		1750m³/h	
Refrigerant and Volume		R134a/1.4kg	
Compressor	Brand	TCCI	
	Model	QP15	
	Displacement	163cc/r	
Condenser	Coils	Parallel flow condenser	
	No. of fan	2 pcs	
	Dimensions	1068*678*170mm	
	Weight	30.5kg	
Evaporator	Coils	Inner grooved copper tube	
	No. of fan	2pcs	
	Dimensions	1124*535*180mm	
	Weight	15kg	
Recommend Box Volume		6~8m³	



Chill302 - Freezer

Cooling Capacity (+38°C/100°F)	Temperature	Watt	Btu
	-18°C	1750	5971
Temp. Range		-18°C~+30°C	
Voltage		DC12V/24V	
Defrosting		Hot gas defrosting	
Airflow Volume		1750m³/h	
Refrigerant and Volume		R404a/1.4kg	
Compressor	Brand	TCCI	
	Model	QP16	
	Displacement	163cc/r	
Condenser	Coils	Parallel flow condenser	
	No. of fan	2 pcs	
	Dimensions	1068*678*170mm	
	Weight	30.5kg	
Evaporator	Coils	Inner grooved copper tube	
	No. of fan	2pcs	
	Dimensions	1124*535*180mm	
	Weight	15kg	
Recommend Box Volume		6~8m³	

Chill303 - Freezer with Electric Stand by

Cooling Capacity	Road	0°C/+38°C	3100W	10577Btu
		-18°C/+38°C	1750W	5971Btu
	Standby	0°C/+38°C	3300W	11260Btu
		-18°C/+38°C	1650W	5630Btu
Temperature Range		-18°C~+30°C		
Voltage		DC12V/24V		
STANDBY Voltage		AC220V/380V		
Defrosting		Hot gas defrosting		
Heating		Hot gas heating		
Evap. Air Volume		1750m³/h		
Refrigerant & Volume		R404a/1.3kg		
Compressor	Road	Brand	TCCI	
		Model	QP16	
		Dis.	163cc/r	
	Standby	Dis.	35.6mL/revd	
Condenser	Coils		Parallel flow	
	Fan Qty.		1Pcs	
	Size		1068*1130*235mm	
	Weight		83.5kg	
Evaporator	Coils		Copper tube and fin	
	Fan Qty.		2Pcs	
	Size		1124*535*180mm	
Recommend Box Volume		6~8m³		



Chill401 - Chiller			
Cooling Capacity	Temperature	Watt	Btu
	0°C	5300W	18084Btu
Temperature Range		0°C~+30°C	
Voltage		DC12V/24V	
Defrosting		Auto defrosting	
Evap. Airflow Volume		2600m³/h	
Refrigerant & Volume		R134a/2.1kg	
Compressor	Brand	TCCI	
	Model	QP16	
	Dis.	163cc/r	
Condenser	Coils	Copper Tubes & aluminium fins	
	Fan Qty	2 Pcs	
	Dimensions	1120*405*510mm	
	Weight	42.5kg	
Evaporator	Coils	Inner grooved copper tubes & aluminium fins	
	Fan Qty	3 Pcs	
	Dimensions	1280*610*220mm	
	Weight	25.5kg	
Recommended Box Size		20~30m³	

UPCOMING PRODUCTS

Chill 601 units will be launched by june 2024



Chill601 - Freezer		
Refrigerant	R404a	
Cooling capacity(W){Road}	8250W/ 0°C	
	5185W/ -20°C	
Cooling capacity(W){Standby}	6820W/0°C	
	4485W/-20°C	
Compressor	FK390/385cc	
Condenser	Dimension L*W*H(mm)	1825*860*630
	Weight(kgs)	475
Air volume m3/h	2550	
Evaporator opening dim(mm)	1245*350	
Defrost	Auto defrost (hot gas defrost) & manual defrost	
Voltage	DC12V/ 24Vv	
Recommended Box Size	40~55m³	

UPCOMING ALL ELECTRIC

Chill 403 AE & Chill 603 AE will be launched by January 2025



Chill403AE- Chiller			
Cooling Capacity	Temperature	Watt	Btu
	0°C	5300W	18084Btu
Temperature Range		0°C~+30°C	
Voltage		DC12V/24V	
Defrosting		Auto defrosting	
Evap. Airflow Volume		2600m³/h	
Refrigerant & Volume		R134a/2.1kg	
Compressor	Brand	TCCI	
	Model	QP16	
	Dis.	163cc/r	
Condenser	Coils	Copper Tubes & aluminium fins	
	Fan Qty	2 Pcs	
	Dimensions	1120*405*510mm	
	Weight	42.5kg	
Evaporator	Coils	Inner grooved copper tubes & aluminium fins	
	Fan Qty	3 Pcs	
	Dimensions	1280*610*220mm	
	Weight	25.5kg	
Recommended Box Size		20~30m³	

We are Authorised Distributors in GCC for **Huabon Thermo** units made in China,



HT-280T- Chiller Unit for Vans,
Driven by the vehicle engine, HUABON THERMO Chiller Van Refrigeration Unit C-300T is designed for 6~9m³ van box size, to deliver chill & fresh foods, medicals, fruits, vegetables, fresh meat, etc.



HT-350- Freezer Unit for Vans,
Driven by a vehicle engine, HT350T is a freezer van with operating temperatures -18 to +25 c designed for 6-10 M³ box sizes suitable for delivery of frozen goods.



HT-450- Chiller Units for Trucks,
Driven by vehicle engine, HT-450 with operating temperature +2 to +5 C designed for 15- 22m³ box sizes suitable for delivery of chilled goods.



HT-680 Truck Refrigeration Unit:
Vehicle-powered refrigeration for large -sized insulated trucks and vans. The refrigeration unit uses a reputable and engine-mounted compressor TM21 /TK21(QP21), with a nose-mounted condenser and maximum cooling for 15-22M³ fresh or frozen truck delivery.





Insulated PUR Panels

Our Insulated Sandwich Panel is a staple of the Wafes product line. Polyurethane (PUR - standard) rigid foam with a 90% closed cell structure is used to make Wafes Panels. The thermal conductivity is $0.22 \text{ W/m}^2\text{K}$, and the overall density is $40 \text{ to } 42 \pm 2 \text{ kg/m}^3$.



Panel Cladding

- As a standard it comes with preprinted hot dipped galvanized steel (G.I Seet), Lock forming quality, according to EN 10 10142, Zinc coating of 275 gr/m^2
- Panel inner and outer skin can be customized (PPGI, GRP, SS304 & single skin)
- PVC coated
- Front side: 25-micron regular polyester including Mill's Primer, in color off-white
- Back side: 5 -10-micron Epoxy Primer suitable for PU Foam.
- Sheet/panel protection: Sheets are protected with a 50-micron protective film on the top side.



Cam Lock Panels

The locking system provides the flexibility of simple assembly or disassembly while meeting the necessary dimensional requirements.

The products' dependability and quality are ensured, as well as the materials' excellent dimensional and physical stability and durability. When temperatures are negative, Metal Cam lock systems work best because they guarantee zero condensation.



Tongue & Groove joint Panels

Tongue & Groove edges are used to link modular cold store panels, which are utilized in cold rooms, clean rooms, and refrigerated vehicle bodywork. These panels' flexibility makes it possible to tackle a variety of insulating issues that arise in light pre-fabrication. The panel insulation does not deteriorate over time, does not absorb odors that are harmful or irritating, does not encourage the growth of fungus, and does not facilitate the formation of dew.

Panels are offered with the following unique features

- Light weight
- Air tight fire rated joint
- High insulation
- Closed cell foam structure



Cold Room Doors Hinged Doors:



Wafes hinged doors come fully assembled and ready to install with all necessary hardware. An integral panel with rising hinges and a rubber gasket is created by joining two door leaves made of a special profile aluminum and a wood thermal barrier. It is made with a special aluminum profile with a wire provision for the door heater specifically for freezer applications. Aluminum door frames are incorporated with wall panels in chiller rooms.





Sliding Doors:

Sliding doors are frequently delivered as a complete set, ready for installation with all the necessary hardware. The doors' rails are made of saltwater resistant materials. The door leaf is constructed from an injected sandwich panel, and it is completely encased in a polyester steel sheet that is equipped with rail fittings as well as door locks and handles. In order to prevent gelation and ice formation, freezer doors are provided with heating cables in the frame.



Reefers Trucks:

The insulated cooling enclosure of the WAFES production line is designed to the harsh climate and geographical conditions of the Middle East. Our Below products extensively used in dairy, poultry, vegetable, meat, and ice cream segments.

- Chiller Trucks
- Freezer Trucks
- Dry Box Trucks
- Chiller/Freezer with Moveable partition



Reefer Trucks are offered with the following unique features

- Our body has a general aesthetic appearance and feel thanks to specially engineered custom profiles.
- Reefer Bodies' floor plan and application options can be tailored to your needs.
- A special attention to detail is maintained in the choice of raw materials, water-proof fasteners and rivets, sealant, water-proof internal LED ceiling lights
- With container locks and hinges, Double Wing Rear Doors (DWRD) can withstand challenging climatic and geographic conditions.

Warranty for the panels is 5 years against manufacturing defects



Van Conversions:

Refrigerated vans with cooling bodies are used to convey fresh and frozen food products. It is especially helpful for transporting foods to temperature-sensitive commodities. Our products below are widely used by customers and industries in the Online delivery, Cargo services, Catering services & Flower companies.

- Chiller Vans
- Freezer Vans
- Dry Cargo Vans
- Chiller / Freezer with Partitions





Van Conversions are offered with the following unique features

- The most recent 3D scanning technology allows us to manufacture our panels to precisely fit each van's dimensions and shape, eliminating any gaps while also providing accurate insulation and more loading space. Each van has its own unique dimensions and shape.
- Our high-density panels ensure high thermal conductivity, strong & durable insulation.
- Our van conversions floor has a variety of options in flooring like Aluminium chequered, GRP lining & Polyurea flooring
- And we offer Partitions, Aluminum racking & PVC polar curtains.



Accessories

Our expertise selects the best truck body accessories for our Reefer bodies. Below is a list of accessories to choose from to meet your needs



Mounting Brackets



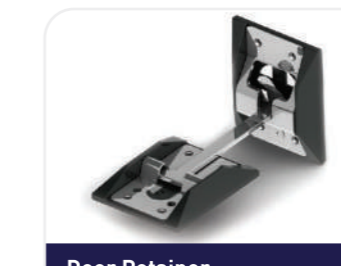
Refrigeration Hoses & Fittings



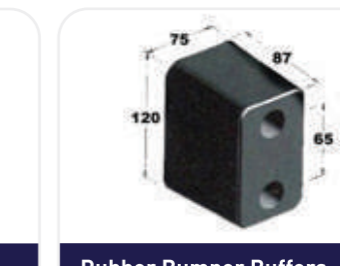
Hinges SS- Nevpa Made in Turkey



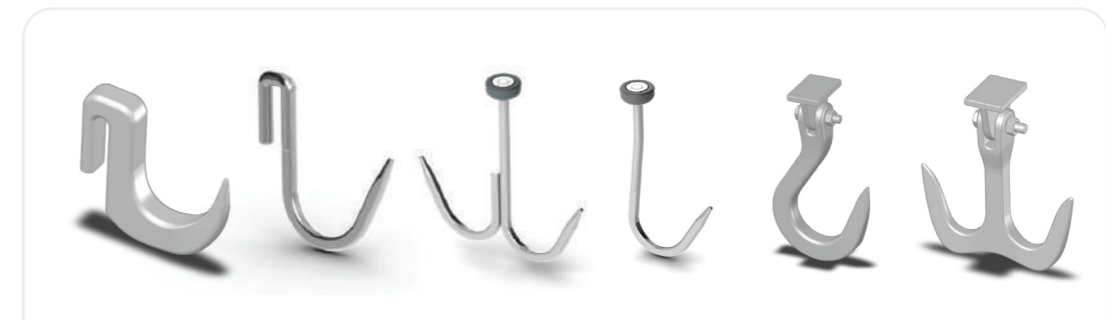
External Lock Set Ø 22 (SS)



Door Retainer



Rubber Bumper Buffers



Meat Hanging Hooks:
We supply meat hanging Single & Double Hook



Door Gaskets



Meat Hanging Rails



Recessed Light LED Type



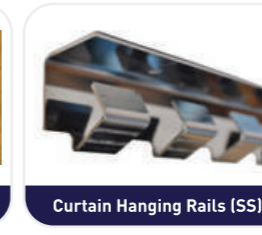
Cargo Rail & Lashing



Wire Trim Edge Cutting Tape



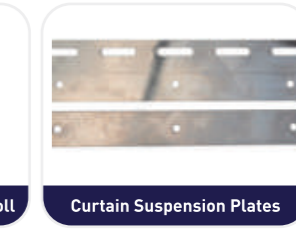
Reflective Stickers



Curtain Hanging Rails (SS)



Polar Ribbed PVC Curtain Roll



Curtain Suspension Plates



Services

Cold Room Projects: We provide a broad range of industrial items to meet these needs on any scale. Commercial walk-in chillers and freezers, temperature-controlled spaces, and refrigerator monitoring systems are all part of our product portfolio. Utilizing the best engineering and manufacturing procedures at every stage ensure the highest quality of the final product.

- Walk-in Chillers & Freezers
- Industrial Cold Rooms
- Cold Stores
- Maintenance of Refrigerated Vehicles

Chill Units is a three-year Warranty

After Sales Servies is available in this location

Abu Dhabi, Dubai, Sharjah, & Umm Al Quwain



Our Clients

